

6. PLANSEE SEMINAR

fluoric acid solution produced satisfactory bonding surfaces. The structure and chemical, mechanical, and physical properties of the bond area are consistent with those of the parent metal. Fig. 1 shows a typical solid-phase bond in this system.

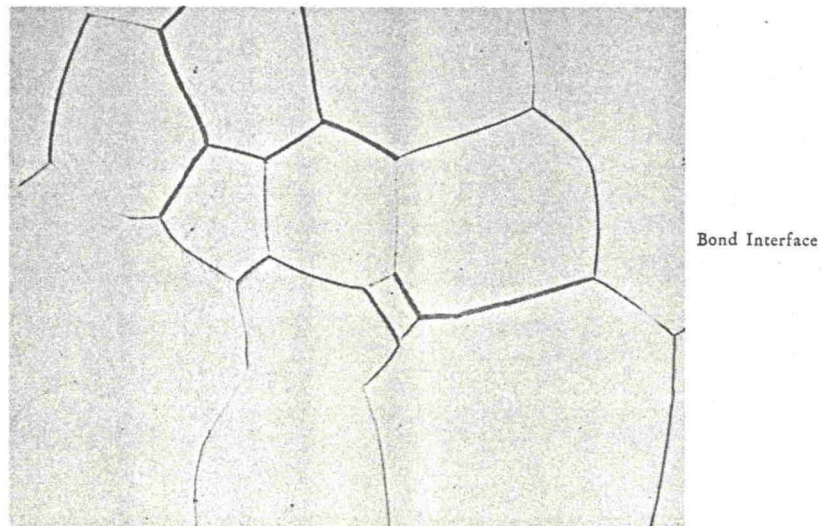


Fig. 1. Columbium self bond. $\times 100$.

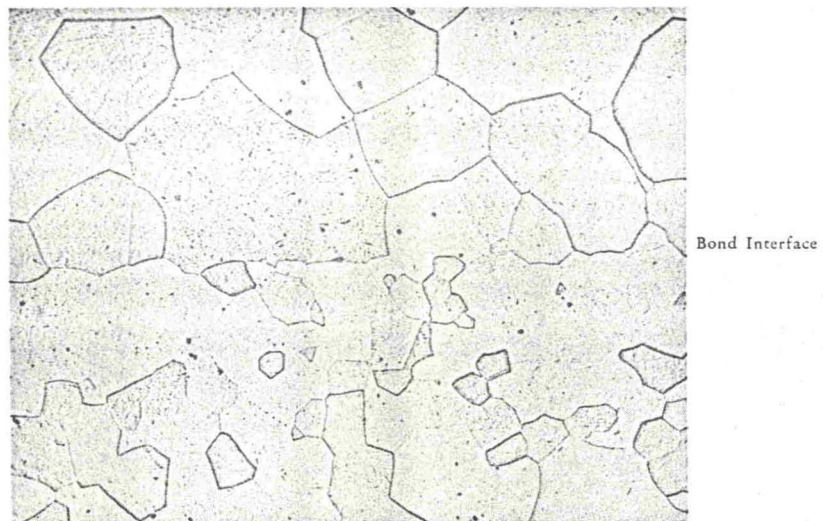


Fig. 2. Columbium-6 w/o vanadium alloy self bond. $\times 100$.